



Love Dares Speak its Name

Friday, January 14, 2011 • 7:30 pm
Saturday, January 15, 2011 • 7:30 pm

Central Presbyterian Church
500 Cedar Street • St. Paul, MN

W. Bryce Hayes
GUEST CONDUCTOR

Paul Kovacovic
ACCOMPANIST

Mindy Ratner
NARRATOR

BOTH PERFORMANCES



Large
Print



SATURDAY ONLY

The Flower Shop Project
GUEST THEATER COMPANY

Val-o-Grams
 Send a Loved One a Singing Valentine
 Singing Valentine greetings
 by **OVation**
 delivered LIVE via telephone

Choose from 6 popular love songs

Proceeds will support One Voice singers in attending the GALA Choruses Festival 2012 in Denver, CO.

We will call your dear one(s) with a personal greeting from you and sing a Valentine song they will remember for years to come.

One Voice MIXED CHORUS
 Minnesota's GLBTQA Chorus

OVation
 Ready, Willing & Vocal

Time Slots for Valentine calls:
 Sunday, February 13, 12:00 PM – 3:00 PM

\$15 for one song; \$20 for two
 (Don't forget moms, dads, grandparents, & kids)

Share your love in song.
 Go to www.ovmc.org/love to place your order.

Sing with One Voice!



Auditions for our Spring season will be held on January 24 & 25, 2011.

Sign up for auditions in the lobby, or call the One Voice office to schedule an audition and receive an information packet. One Voice rehearses from 7:00 - 9:30 pm on Monday nights. For audition information contact us at:

651.298.1954 • info@ovmc.org • www.ovmc.org

One Voice Mixed Chorus 2010-2011 Season

September 16, 2010 • 7:00 pm

Singing in the Rain Flash Concert
 Target Field Plaza

FREE event!

Fall Tour - November 12, 13, 14, 2010

Love Dares Speak its Name

Alexandria • University of Minnesota—Morris • Gaylord UCC

FREE events!

January 14 & 15, 2011 • 7:30 pm

Love Dares Speak Its Name

Central Presbyterian Church

March 19, 2011

Spring Fever & Silent Auction

Doubletree - St. Louis Park

April 2011

OUT in Our Schools

A day of in-school performances

Schools to be announced soon

June 10, 2011 • 7:30 pm & June 11, 2011 • 2:00, 7:30 pm

Bang Boom Crash!

In the Heart of the Beast Puppet and Mask Theatre

June 6, 2011 • 7:00 pm

Queer Music Consortium (QMC) Pride Concert

Como Park Pavilion

FREE event!

For tickets or more information:

info@ovmc.org or 651.298.1954

Christine Hazel
 Realtor™

Coldwell Banker Burnet
 Top 1% in Real Estate Sales
 Minneapolis Lakes Office
 3033 Excelsior Boulevard
 Minneapolis, MN 55416

direct 612.915.2585
 business 612.920.5605
 fax 612.920.4706
chazel@cbburnet.com



One Voice

MIXED CHORUS

Minnesota's GLBTA Chorus

Building community and
creating social change
by raising our voices in song.

Contact Us:

One Voice Mixed Chorus
732 Holly Avenue, Suite Q
Saint Paul, MN 55104-7125
651.298.1954
info@ovmc.org or
www.ovmc.org

GALA CHORUSES

One Voice Mixed Chorus is a member of GALA Choruses. The mission of the Washington, DC based GALA Choruses is to change our world through song. Founded in 1982 by fourteen choruses, GALA Choruses is the only international choral association for gay, lesbian, bisexual, transgender and allied choruses. For more information about GALA Choruses and its programs, visit the website: www.galachoruses.org.

Welcome

From the Guest Conductor

After having served as One Voice's accompanist for the past four seasons, I am very pleased to be joining the organization as Guest Conductor during this fall season while our Artistic Director, Jane Ramseyer Miller, is on sabbatical. Through my time at the keyboard I have developed a passion and love for the great work that One Voice accomplishes through the vital art of choral singing, and I am thrilled to be able to step onto the podium for this concert.

To love and be loved is universally understood as one of the most basic of human desires. All people, regardless of gender or sexual orientation, experience this desire throughout their lives. Our concert will explore this basic human truth through a diverse collection of poetry, skits and songs.

The first part of our concert will examine this idea of 'love'. We will look into how love has the power to change everything in your life, especially if your desire does not fall into the man/woman societal norm. We will explore how GLBT people can sometimes struggle with coming to terms with their desire, and how that desire is often questioned by society. Our message here is clear: at the end of the day, whomever the object — it's simply love.

In the second half of our program, we will shift to the subject of commitment. Just as all people want their love to be accepted by society, the same is true of the desire to have that love recognized through commitment. Whatever label you give it — marriage or commitment — the joining into a life-long bond is something many people long for.

In addition to the fantastic choral music of One Voice and OVation (which includes world premieres, new choral works and rarely performed music), skits by The Flower Shop Project and spoken word selections by MPR Classical Music host Mindy Ratner will compliment this program. The 'marriage' of the clarity and precision of spoken word with the beauty and depth of our sung program will increase the universality of our message.

~ W. Bryce Hayes, Guest Conductor

Thank you from the Guest Conductor to:

- ▶ One Voice singers and Fifth Section for taking on this important issue this season.
- ▶ Marisa Geisler, Phyllis Goldin, Janis Ian, Jeffrey Nytech and Jeffrey Van - the composers we were lucky enough to work with this season.
- ▶ Theo Brown, Duane Dial, Kate Lynn Hibbard and Allan Warrior for helping gather the poetry and write the narrations.
- ▶ Bryan Gerber and The Flower Shop Project for joining us on this journey.
- ▶ Mindy Ratner for lending her magnificent talents to this concert.

For 22 years One Voice Mixed Chorus has united gay, lesbian, bisexual, transgender people and straight allies in working for social change. One Voice is known for its musical excellence, diverse repertoire, humor and strong commitment to community outreach. Its 90 singing members span ages 17 to 71, and its "Fifth Section" boasts more than 50 non-singing volunteers. One Voice is the largest GLBT mixed chorus in North America, and has performed for thousands of people in the Twin Cities, Greater Minnesota and beyond.

Set One

Please turn off cell phones. No photos or video allowed during the performance. Thank you!

The Shape of Change

Kate Lynn Hibbard

*Two things of opposite nature seem to depend
On one another, as a man depends
On a woman... This is the origin of change.
~ Wallace Stevens, from Notes Toward a Supreme Fiction*

Darker night draws twilight on
And both are part of the same night,

And the trees that deepen the green wood,
Their thousand needles and leaves a forest

Of particular trees. Our twinned, singular bodies,
Rounded as moons, lie side by side,

Each unique, distinct as the cup
Of my own two hands,

The lines of the left palm telling what was,
The lines of the right telling what will be.

And this is the shape of change, not a line
But a circle, apple of light that turns

Through time, to fill us with hunger
For all we can love.

*~ From Sleeping Upside Down (Silverfish Review Press, © 2006).
Used by permission of the author.*

Love

Love Changes Everything (from "Aspects of Love")

Music by Andrew Lloyd Webber, Lyrics by Don Black and Charles Hart, arr. Ed Lojeski

Being Alive (from "Company")

Steven Sondheim, arr. Robert Page

Secret Love (from "Calamity Jane")

Music by Sammy Fain, Lyrics by Paul Francis Webster, arr. Chad Westrick

Simply Love

Holly Near, arr. Joan Szymko

515: Fishing for Love

Bagels & Biscuits

Music by Theodore Lucas, Lyrics by Terry W. Loessin

SOLO: LISA WINGER

READERS: DENNIS KEARNEY, DARCY JUHL,
JOHN BAGNIEWSKI JOHN BAGNIEWSKI

515: Partner/Partner

The Shape of Change

Music by Marisa Geisler, Text by Kate Lynn Hibbard

Love Speaks its Name

Jeffrey Nytch

I. Save Only Love

Text by Willa Cather

II. No Obligation

Text by Vila Sackville-West

III. Rise Up, My Love

Text from Song of Solomon

I'm Yours

Jason Mraz, arr. Mac Huff

SOLO: ANITA MCCOLLEY

- *Intermission* -



Set Two

Commitment

Old-Fashioned Commitment Ceremony (from "Oh My Godmother!")

Ron Lytle, arr. John Erreca

SOLOS: DANIELLE BOOR, BECKY WARREN, ALLAN WARRIOR, ALLAN HENDEN

World Premiere of Choral Arrangement

This Marriage

Eric Whitacre

FEATURING OVATION: ALLAN WARRIOR, BRIAN GEVING,
DARCY JUHL, JAY KURVERS, MARISA GEISLER, OWEN HAND,
REBECCA WARREN, SHARI PLEISS

515: Anatomical Gift

A Sprig of Rosemary

Music by Jeffrey Van, Text by Amy Lowell

Wedding Cantata

Daniel Pinkham, Text from Song of Solomon

I. Rise Up, My Love

SOLOS: PAUL PETRELLA, GLORIA VANDE HOEF

II. Many Waters

III. Awake, O North Wind

IV. Set Me as a Seal

Married in London

Janis Ian, arr. W. B. Hayes

World Premiere of Choral Arrangement

The Couple Next Door

Phyllis Goldin, arr. W. B. Hayes

World Premiere of Choral Arrangement

I Do

Eric Lane Barnes

*Please join us for an after-concert reception to meet the performers
in the Fellowship Hall behind the sanctuary.*

This concert is presented in partial fulfillment of the doctor of musical arts degree in conducting at the University of Minnesota. W. Bryce Hayes is a student of Kathy Saltzman Romey and Matthew Mehaffey.

Married in London

Janis Ian

We're married in London but not in New York,
Spain says we're Kosher, the States say we're pork.

We wed in Toronto the judge said "Amen",
and when we got home we were single again.

It's hard being married and living in sin
sometimes I don't know just what state I am in.

Thank God I'm not Catholic, I'd be a mess
trying to figure out what to confess.

My passport in Sweden says I've got a wife,
Amsterdam tells me I'm partnered for life.

But back in America land of the free
I'm a threat to the national security.

If I were a frog here is what I would say
it's hard being green and it's hard being gay
But love has no color and hearts have no sex
so love where you can and screw all the rest!



The Couple Next Door

Phyllis Goldin

We are the couple next door
Together thirty years and more
With one another tried and true
Love bonds us, as it does you.

We are your neighbors and friends
With you through life's twists and bends
We are your daughters and sons
We live among you; we are the ones who ask,

"America, how can it be,
Never next of kin are we?"

From all walks of life we come.
All forms of work we have done.
We are all colors and creeds
like you, we all have human needs.

There is no you or we, just us
Softly the same beneath the crust
Every heart beats out its claim
Until death calls each of us by name

America, how can it be
Never next of kin are we?

We are the couple next door
Together thirty years and more
With one another tried and true
Love bonds us, as it does you.

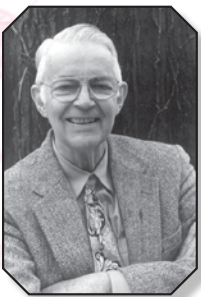
The Story of the Music

Tonight's program will explore the ideas of love through a variety of musical and literary genres. Our focus is both on popular repertoire, tunes that many people will be familiar with, and on lesser-known obscure works. We are very pleased to be presenting the third performance of *Love Speaks its Name* by Jeffrey Nytech (discussed below); the rarely-heard work by local composer Jeffrey Van, *A Sprig of Rosemary*; and a series of new works: *The Couple Next Door* by local composer Phyllis Goldin, heard here in a choral arrangement for the first time, *Married in London* by well-known singer-songwriter Janis Ian, and *Shape of Change* for which both the poet (Kate Lynn Hibbard) and composer (Marisa Giesler) are One Voice members. Thematically and musically, the concert is anchored in two key works: *Love Speaks its Name* and the *Wedding Cantata*. Together these works frame the idea of love and community-supported relationships that all people aspire to achieve.



***Love Speaks its Name* ~ Jeffrey Nytech (b. 1964)**

A delicate and profound musical exploration of love boldly blossoming, in strong texts from compelling writers. Willa Cather is a Pulitzer Prize-winning American poet and writer. Both resolutely private and plainspoken, she destroyed most of her letters and drafts, leaving much of her personal life with longtime companion Edith Lewis in obscurity. "Save Only Love," derived from her poem "Evening Song," forms the first movement of this triptych. Perhaps the most ostensible bisexual and polyamorous figure in British literary history, Vita Sackville-West maintained a long and tenderly romantic relationship with her husband Harold Nicolson, while engaging in dalliances of varying durations with a number of notable women, including Violet Trefusis and Virginia Woolf. "No Obligation", the text of the second movement, was written in 1932, when Vita was involved in a complex sexual triangle with female journalist Evelyn Irons and her partner at the time, Olive Rinder. The final movement draws a passage from the Song of Solomon (or Song of Songs), the most sensuous, erotic and poetic book in the Bible. A celebration of the divine gift of physical intimacy and ecstasy, this text also exalts the power and beauty of the enduring covenant created through that intimacy and the marriage of souls.



***Wedding Cantata* ~ Daniel Pinkham (1923-2006)**

This cantata takes its texts entirely from the Song of Solomon, a book of the Hebrew Bible concerned with the many forms of love. Pinkham sets four well-known texts from this book in English translation, in a variety of modernist, but accessible musical styles. The opening movement, "Rise Up, My Love," speaks of lovers excited to be entering into a physical and emotional bond together. The second movement, "Many Waters," is a canon (or round) set in four voices, where each voice sings the same material of the voice before it; set here for tenor, bass, soprano and finally alto voice.

The canonic writing symbolizes the relentless flow of water. The third movement, "Awake, O North Wind" is a rollicking sea shanty, which calls the lovers to consummate their relationship. This movement ends excitingly on the word "blow" with a powerful major chord. The final movement, "Set Me as a Seal," is listed as an Epilogue. Here the piece comes to a peaceful close as the lovers reflect on the bonds built between them, "for love is strong."

Guest Artists



Mindy Ratner

Mindy Ratner is a host and producer on the Classical Music Service of Minnesota Public Radio, where she is heard on weekends. She began her career in public broadcasting following her graduation from the University of Wisconsin-Madison, working first for the local public television station and then for Wisconsin Public Radio.

She moved on to stations in Cincinnati and Philadelphia before joining Minnesota Public Radio in 1983. In 1998 and '99, Ratner took a leave of absence to work as a music host and producer for China Radio International in Beijing. Her spare time is devoted to international travel; folk, ballroom and contradancing; singing in the Minnesota Chorale; her two cats, and trying to stay ahead of the weeds in her garden.



The Flower Shop Project Theater Company

The Flower Shop Project is determined to create and produce new works of theatre that are smart, ballsy, and fundamentally entertaining. Their goal is to produce original scripts from within the company, as well as to solicit and produce scripts from other local playwrights. The Flower Shop Project was founded in January 2004, officially incorporated in Minnesota in April 2005, and approved for 501(c)3 non-profit status in July 2005.

"515" – The Flower Shop Project and Project 515

"515" was created as a collaboration between choreographer Bryan Gerber, local theater company The Flower Shop Project, and Project 515 – a non-profit organization lobbying for same-sex equality in Minnesota. Using Minnesota's definition of marriage as being between one man and one woman, research has shown that there are at least 515 laws in our state that exclude same-sex couples from certain rights and benefits that should be provided to everyone.

"515" is an artistic representation of several of these laws through song, theater and dance. It is a show that we hope will bring a serious message to people who otherwise may never hear about these laws and the very real discrimination faced by same-sex couples in Minnesota every day. We hope to change the state of dialogue in Minnesota around the subject of same-sex equality by presenting the vision of a world equality where all families are equally valued and respected under the law—in their homes, neighborhoods, workplaces and communities. For more information, please visit our website at <http://theflowershopproject.com> or call us at 612.388.8628.

Roster: Claire Lloyd, Shannon Troy Jones, Paul Rutledge, Adam Moore

Scene List

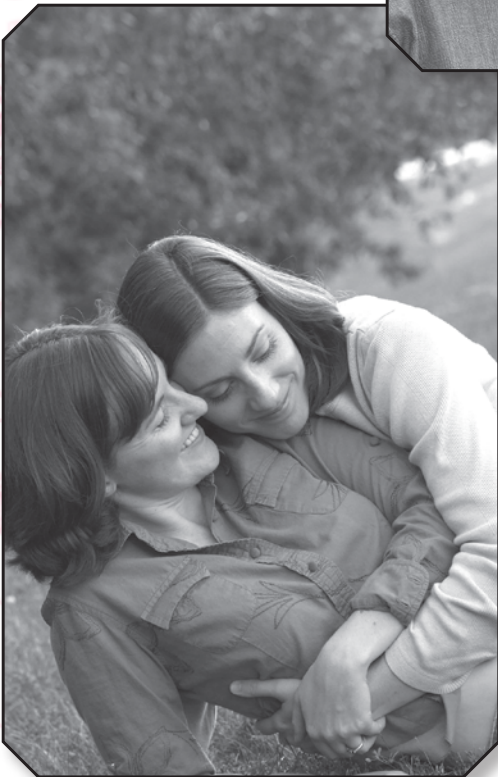
Fishing For Love – written by Sarah Howes

Partner/Partner – written by Matthew Everett

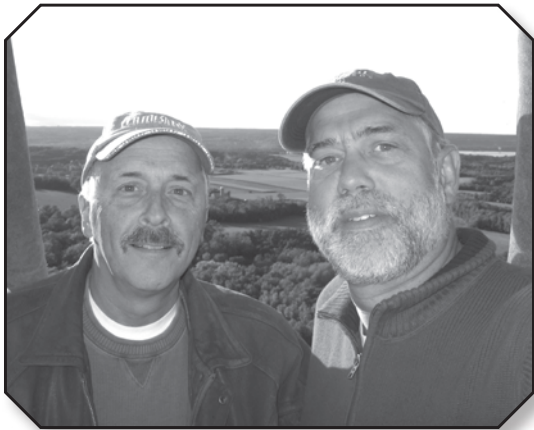
Anatomical Gift – written by Matthew Everett



Love Dares Speak its Name A Celebration of Love



and Commitment within the One Voice Family



Staff & Personnel



W. Bryce Hayes, Guest Conductor

W. Bryce Hayes maintains an active career as conductor, teacher, pianist, accompanist and singer. He received a Bachelor of Music degree in music education summa cum laude from Westminster Choir College and a Master of Music degree in Choral Conducting from Temple University. Bryce is currently pursuing a Doctor of Musical Arts degree in conducting from the University of Minnesota, and serves as the Choral Director at Woodbury United Methodist Church. Bryce was recently honored by receiving the Elaine Brown Leadership Award for his commitment to improving the community through choral music.



Paul Kovacovic

Paul Kovacovic's musical interests are wide-ranging, from performing and teaching piano to arranging, composing, and directing. As a pianist, Kovacovic has concertized across the United States and Czech Republic. He has won First Prizes in the Schubert Club, Thursday Musical, and Indiana University Piano Concerto Competitions. He has performed for many Twin Cities theaters, including the Minnesota Opera, Ordway Center for the Performing Arts, Actor's Theater, and Chanhassen Dinner Theatres. Kovacovic has composed pieces for the Twin Cities GLBT community, including *Our Voice of Truth*, a song for One Voice and TransVoices (a transgender community chorus), and *To Earth and Back* for the Minnesota Philharmonic Orchestra. Kovacovic studied at Indiana University and the University of Minnesota, and he currently teaches at Mount Olivet School of Music and Concordia University.



Randi Grundahl Rexroth, OVation Ensemble Coach

OVation Ensemble Coach Randi Grundahl is very pleased to be working with OVation and has enjoyed singing with this talented group of singers. She is also a choir director at the Visitation School in Mendota Heights and is music directing several shows in Hudson, Wisconsin, and at Macalester College. When she's not conducting, teaching or directing, she's arranging and composing while trying to perform

One Voice Personnel

Guest Conductor	W. Bryce Hayes
Artistic Director	Jane Ramseyer Miller
Accompanist	Paul Kovacovic
Development & Public Relations Manager	Scott Chamberlain
Operations Manager	Tom Becker
Events & Outreach Coordinator	Lisa Boynton
OVation Ensemble Coach	Randi Grundahl Rexroth
Assistant Director	Emily Tinawi
Ad Sales	Elaine Voboril, Tom Becker
Web Master – ovmc.org	James Gottfried
Editor – One Voice News	James Gottfried
Bookkeeper	John Whalen
Music Librarian	Martha Bentley

Concert Personnel

Stage Manager	Sarah Bizek
Front of House	Tom Becker
Ticket Manager	Brad Hanson
ASL Interpreter	Catharine Van Nostrand
Audio Descriptor	Laura Wiebers
Technical Guru	Andy Kedl
Percussion Coordinator	Chris Nelson
Guitar Coordinator	Paul Pederson
Program Design	Karen Muleski
Program Coordinator	Jen Rivera
Braille Programs	Jennifer Dunnam

Members & Committees

Sopranos

Anita McColley
Betsy Lee
Birdie Murphy ♣
Britt Abel *
Carla Peck
Cheryl Hornstein *
Darcy Juhl *
Diane Christopherson
Emily Tinawi *
Erika Rae *
Gloria Vande Hoef ♦
Jane Sage
Kathleen Brice
Kim Frazier *
Lisa Winger
Liz Hardin
Lousene Hoppe
Marisa Geisler *
Marnie Milbert
Martha Bentley
Melanie Trnka
Melissa Cuddy
Michelle Maulean
Rachel Hultman
Rose Kantor
Rosemary Kosmatka
Sarah McMahill
Sarah Olson
Steph Pederson
Vicki Janisch-Tri

Altos

Allison Thielen ♦
Amber Rosett
Beck Johnson
Betty Perry
Caro Smith
Cathy Geist
Colleen Watson *
Danielle Boor
Elaine Voboril
Elizabeth Williams
Heather Elliot
Heather Ferguson
Jen Rivera *
Jennifer Heaton
Jess Rosenfeld
Jessica Eastman
Joan Wing
Karen Evans
Karen Muleski
Kate Lynn Hibbard
Kim Makie
Kristen Schweiloch
Lena Collister
Lisette Schlosser *
Liz McClear
Lynne Larsen *
Michele Bird
Rebecca Warren *
Robin Keck

Sara Pecor ♣
Shari Pleiss *
Sharon Barnd
Sherrie Luetgers

Tenors

Ari Edes
Benjamin Lamb
Brian Geving *
Cate Hesser
Chris Johnson ♣
Cory Gottfried *
Duane Dial
Grant Meidal
JD Stocksett
John Bagniewski
John Whalen
Katrina Johnson
Michael Dodson
Nathan Mickelsen *
Owen Hand ♦ *
Paul O'Hara
Paul Petrella
Wayne Schneider

Basses

A.P. Hopper ♦
Allan Henden
Allan Warrior *
Amanda Stella Maris
Andy Kedl
Brian Millberg
Chris Nelson
Dennis Kearney
Dick Van Deusen ♣
Don Ofstedal *
Douglas Munro
Galen Smith
James Gottfried *
Jay Kurvers *
Joel Mugge *
Kevin Smieja
Lane Skalberg
Paul Dykes
Ray Makeever *
Scott Burglechner *
Spencer Putney
Theo Park

* Assistant Director or
Accompanist
♦ Section Music Leader
♣ Section Representative
* OVation Ensemble
* On Leave

Fifth Section

*Our non-singing
volunteers*

Amanda Tempel
Anita Wheeler
Ann Leyden
Brad Hanson
Brenda Eilers
Brent Nelson
Carolee Lindsey
Carrie Michurski
Cathy Sherwin
Cindy Badilla-Melendes
Cyndi Hopper
Darolyn Gray
Deborah Rasmussen
Emily Goodman
Emma Moonier
Erick Chamberlain
Erin Oberdorfer
Gillian Pederson
Ginger Kranz
Gretchen Roesler
Joe Harriman
Joe Rockers
Jon Lewis
Karen Stombaugh
Kate Reilly
Kate Stoeckel
Kathleen Remund
Keith Jacko
Kelli Heckman
Kevin Saltzer
Kristyn Hopper
Laurie Dickinson
Linda Alton
Lisa Mendel
Marjorie Sigel
Mary Jean Mulherin
Mary Warne
Marylou L. Steeden
Michael Wright
Nicole Navratil
Pat Levine
Paul Pederson
Rachael Kroog
Randy Okan
Randy Stern
Ray Hanzak
Rosie Kelley
Russ Lovaasen
Ruth Birkholz
Sarah Bizek
Scott Cady
Shannon Pierce
Sonya Boeser
Stephanie Peck
Stephanie Peterson
Steven Yang
Terry Steeden
Todd-Allen Hamilton
Wayne Kuklinski

Board of Directors

Lisette Schlosser, Co-Chair
Ruth Birkholz, Co-Chair
Scott Cady, Treasurer
Rachel Hultman, Secretary
Jon Lewis
Marylou Steeden
Nicole Navratil

Committees

Development

Emily Tinawi
Jane Sage
Jon Lewis, Brd. Liaison
Karen Muleski
Lousene Hoppe
Marylou Steeden
Scott Chamberlain, Staff
Vicki Janisch-Tri

Finance

Scott Cady, Chair
Carolee Lindsey
John Whalen
Ruth Birkholz

Marketing

Jen Rivera, Chair
Karen Muleski
Laurie Dickinson
Randy Stern
Scott Chamberlain, Staff

Membership and Diversity

Birdie Murphy, Chair
Chris Johnson
Carolee Lindsey
Dick Van Deusen
Sara Pecor

Music Librarian

Martha Bentley

Music Selection

W. Bryce Hayes, Chair
Allan Warrior
Jen Rivera
Kimberly Frazier
Robin Keck

Personnel

Lisette Schlosser, Board Co-Chair
Marnie Milbert
Mary Warne
Ruth Birkholz, Board Co-Chair

Production

Sherrie Lutgers, Chair
Andy Kedl
Brad Hanson
Carla Peck
Katrina Johnson
Lisa Boynton, Staff
Nicole Navratil, Brd. Liaison
Robin Keck
Sarah Bizek
Vicki Janisch-Tri

Major Donors & Sponsors



Crescendo Society Major Donors:

In April 2006, One Voice inaugurated a multi-year giving society to ensure our financial stability for expanding the reach of our mission of social justice. We are grateful to those exceptional donors who have pledged \$1,000 for five years:

Sandra Brau
Scott Burtlechner & Britt Abel
Scott Cady & Sean Haefel
Thomas & Diane Haines
Owen Hand & Kevin Saltzer
Katrina Johnson & Anita Wheeler
Kyle Kossol & Tom Becker
Jon & Lisa Lewis
Carolee Lindsey
Earl Moore & Marcus Larson
Shannon Pierce & Rachael Kroog
Judy Roska
Karen & Jay Rusthoven
Lisette Schlosser & Peg Bauwens
Marylou & Terry Steeden
John Sullivan
Elaine Voboril & Marnie Milbert
Anita Wheeler & Katrina Johnson

Planned Giving

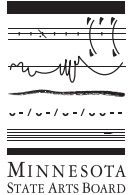
For 20 years, One Voice has pursued its mission of building community and creating social change by raising its voice in song. And through those years, the financial support of our donors has made this possible. In 2008, we inaugurated a new program to honor those who have left us a legacy gift in their wills or estate plans. Thank you to the following individuals for leaving a lasting legacy for America's largest GLBTA chorus.

Colleen Watson
Jane Ramseyer Miller
John Whalen
Paul Petrella
Sharon Barnd
Stephanie Peck

If you have already named One Voice as a beneficiary in your estate plans, or are considering such a gift, please contact Scott Chamberlain, Development & Public Relations Manager, at (651) 298-1954 or DevPR@ovmc.org. Thank you for your generosity.

Foundation & Grant Support

Anonymous
Kevin Mossier Foundation



One Voice is supported by ArtsLab, a collaborative program of the Bush Foundation, F. R. Bigelow Foundation, Mardag Foundation, the McKnight Foundation, and The Saint Paul Foundation with the administrative support of Arts Midwest.

Funding provided in part by a grant from the Minnesota State Arts Board, through an appropriation by the Minnesota State Legislature, a grant from the National Endowment for the Arts and private funders.

One Voice Mixed Chorus has received arts employment support from Minnesota State Arts Board made possible by the National Endowment for the Arts through funds allocated from the American Recovery and Reinvestment Act of 2009.

This activity funded, in part, by the Minnesota arts and cultural heritage fund as appropriated by the Minnesota State Legislature with money from the vote of the people of Minnesota on November 4, 2008.

Corporate Sponsors



Children's Foundation



Matching & In-Kind Corporate Gifts

Cornerstone Copy Center
Earl Moore – Best Buy
Ruth Birkholz – Ameriprise
Cate Hesser – Qwest
Don Ofstedal – Kevin Mossier Foundation
Sally Schlosser – Josten's Foundation
Tim Hanrahan – McKnight Foundation

Thank You!

Dynamic Donors

Donations received from December 1, 2009 through December 1, 2010

One Voice Mixed Chorus relies on the generous gifts of individuals whose hopes and dreams harmonize with our mission. We wish to express our profound gratitude to the following supporters:

Fortissimo

\$2,500 and Above

Katrina Johnson &
Anita Wheeler
Carolee Lindsey

Forte

\$1,000 to \$2,499

Pete Bissonette
Scott Burglechner & Britt Abel
Maureen Day & Judy Roska
Keith Grennier
Thomas & Diane Haines
Kyle Kossol & Tom Becker
Jon & Lisa Lewis
Earl Moore & Marcus Larso
Shannon Pierce &
Rachael Kroog
Karen & Jay Rusthove
Marylou & Terry Steeden
John Sullivan
Elaine Voboril &
Marnie Milbert
Sue Wheeler & Dennis Turner

Mezzo Forte

\$250 to \$999

Daniel Adolphson
James Anderson
Les Bendtsen
Ruth Birkholz
Paul Blom & Robert White
Anita Bradshaw
Chris Dart
John & Susan Dunlop
Danny Eittingon
Shirley Fors
Marisa Squadrito Geisler &
Chris Geisler
Dawn Gelle & Amy Gabriel
Owen Hand & Kevin Saltze
Nancy Heimer
Cate Hesser &
Laurie Dickinson
Al & Alice Holst
Lousene Hoppe &
Sharon Armstrong
Kevin Horne & Eric Gustin
Thomas Knabel & Kent Allin
John Larsen &
Michael Stewart
Cynthia Leaf
Marchetta Madden
Kim Makie
Jane Ramseyer Miller
Michelle Moran

Janet & Harold Mortenson
Joel Mugge
Paula & Andrea Northwood
Ruth Palmer
Betty Perry
Paul Petrella
Kate Reilly
Jane Sage
Lisette Schlosser &
Peg Bauwens
Joseph Stanley &
Lori Zook-Stanley
Dick Van Deusen &
Marjorie Sigel
Allan Warrior & Duane Dial
John Whalen
Harvey Zuckman &
Philip Oxman

Mezzo Piano

\$100 to \$249

John Bagniewski &
Brad Hanson
Sandra Brau
Curt & Adele Brown
Anna Dennis & Karen Wiebe
John Donahue
Tom Dreeze & Evans Mirageas
Peg & Gene Duenow
Jackie Easton
John Edgerton & Heidi Gessell
Marie Therese Elmer
Ed Fisher
Darolyn Gray
Joyce & Jeff Greene
Helene Haapala &
Connie Haapala
Chernah Coblenz &
Kathleen Hagen
Robbin Hahn Bothof &
Thomas Bothof
Tim Hanrahan &
Brian Columbus
Ann Harrington
Bryce Hayes
Cheryl Hornstein &
Wayne Kuklinski
Glenn Howatt
Kimberly Johnson &
Thomas Saylor
Jacqueline & Philip Juhl
Treece Kampmeyer
Jan Knieff & Cathy Har
Deanna Lackaff &
Michael Gilligan
Lynne Larsen & Linda Alton
Cheryl Laurent &
John Sokalski

Betsy Lee & Karen Evans
Gary & Ann Mabbott
John McConnell, M.D.
Kimberly & John P. McDevitt
William & Phyllis Miller
Katherine Murphy &
Eric Alland
Nicole & Curt Navratil
Rebecca Norris
Betsy O'Berry & Jeffrey Menth
Betsy Parrish
Nancy & Anthony Paul
Carla & Stephanie Peck
Kathleen Peter & Cindy Davis
Jacque Reidelberger
Julia Reimer & Phil Lund
Marcia & Robert Rinek
Rena Rogers &
Mary Lou Sorensen
Bonnie Russ
Patricia Ryan
Betty Schilling
Sally Schlosser
Cathy & Andrea Sherwin
Kyle Simonson & Jana Noonan
Linda Joyce Smith
Eric Solberg
Eleanore Troxel
Mary Warne & Linda Kotilin
Colleen Watson &
Mary McDougall
Sandra & Richard Westby
Graham Wood
Louise Ziegler

Piano

\$10 to \$99

Elizabeth Alexander
Anonymous
Aon Corporation
Jeanne Barss
Kirby Bennett &
Philip Losacker
Martha Bentley &
Becky Sechrist
Barbara Coffin
Irene Duraczyk
Kevin Ely
Jason Fredin
Dave & Marilyn Garwood
Ruzana Glaeser
Barbara Haberman
Jean Hartman
Richard & Evelyn Headen
Allan Henden & Alan Scott
Donald Hultman, in honor of
Rachel Hultman
Rachel Hultman

Judith James
Susan Janisch-Warner
Aimee Jobe
Mary M. Johnson
Peter Juhl
Dennis Kearney &
Randy Okan
Evan Kelley
Mavis Klemmensen
Kathy Kornblum &
Clare Tropp
Ann Leviton
Steven Levy
Ed Lewis
Vickie Lind
Sarah Lipsett-Allison
April Lott
Juanita & Richard Luis
Corydon Maschenik
Paul Masiarchin
Bayla McDougal & Darcy Juhl
Lee Meyerson
Phyllis & James Minehart
Randy Miranda
Brian Mulhern &
Dave Wood
Josh Nelson
Connie Nyman &
Joanne Usher
Donald &
Elizabeth Oberdorfer
Michael Oian
Amy Ollendorf
Barbara Olson
Lisa Overn
Jeanne Audrey Powers
Darcy Rowe &
Char Greenwald
David Saltzman &
Diane Bearman
Kate DeVries Smith
Carlos Sneed
Barbara & Frank Squadrito
George Stevens
Arthur R. Stoerberl
Patti Svendsen &
Doreen Dazenski
Sandra Swami
Emily Tinawi
Deanna Varner
Vicki Janisch-Tri & Jerry Tri
Robert Winters
Janice Woodward, in honor of
Mae Muleski

In-Kind Donations

Scott Cady
James Gottfried
Brad Hanson
Rachael Kroog
Carolee Lindsey
Karen Muleski
Jana Noonan
Shannon Pierce
Jen Rivera
Elaine Voboril
John Whalen

Every effort has been made to ensure the accuracy of these lists. If your name has been inadvertently omitted or incorrectly listed, please accept our apologies and contact Scott Chamberlain at 651-298 1954 or DevPR@ovmc.org.



A DIVISION OF
Alerus
FINANCIAL

Randi J. Livon, Mortgage Banker

952.417.8445

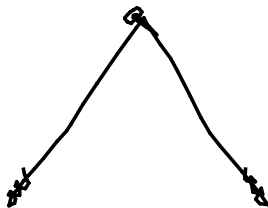
livon@rmgmn.com

www.randilivon.com

Serving the community for over 25 years.



Named a **Super Mortgage Professional of 2010** by
Mpls. St. Paul Magazine.



The
BIG PICTURE

Creative Custom Framing Made Easy

Robin Keck, CPF

612.770.5950 Golden Valley
bigpictureframing@comcast.net

Home, Office, Commercial.
Paper art, 3-D, Stitchery, Repair...
Considerate Pricing, Flexible Hours.

Delivery & Installation Available

Quatrefoil Library

**24 Years of serving the greater
Twin Cities GLBT Community!**

**The Quatrefoil Library invites
you to visit one of the few
GLBT lending libraries in the
country!**

For More Information:
<http://www.quatrefoillibrary.org>
info@qlibrary.org

Quatrefoil Library
1619 Dayton Avenue, Suite 105 - St Paul, MN 55104-6206
651.641.0969

Design: Running Design Group / www.runningdesigngroup.com

The Real Estate Fairy
performs daily. Pirouettes extra.



ANN LEVITON
Broker/Owner
Your OUT of the ordinary
Real Estate Specialist SM

612.270.5722

MAVRIK
 REALTY

ann@realestatefairy.com
www.realestatefairy.com



We Fix Your Everyday Ride
Quality Auto Repair

Oil Changes • Brakes • Tune-ups
Scheduled Maintenance • Exhaust
Foreign & Domestic

Call Val or Mark
612.824.4155

Come and see us at 38th & Nicollet

**Ok, I do take
unisex barbering
to the extreme.**

Lyn-Lake Barbershop

Jayson Dallmann - Proprietor

612.822.6584

3019 Lyndale Avenue South
www.Lyn-LakeBarbershop.com

Hours: Tues. - Fri. 11am-7pm • Sat. 9am-4:30pm • Afterhours by Appointment



Heart to Hands

**Sarah
McMahill,
ACMT**

Chair Massage

Myofascial Release

Craniosacral Therapy

Integrative Relaxing Massage

612-695-5234

www.hearthands.net



Mike Simon

Income Tax Specialist

Michael D. Cassidy, CFP®

Income Tax Specialist

p 612-822-7177 f 612-822-2163

www.rortax.com



**We've
MOVED!**

**Sheehan Corporate Center 4500 Park Glen Road, Suite 425
St. Louis Park, Minnesota 55416**

**Captured Ink Photography
by Jessica Nauman**



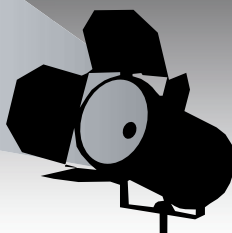
**Children
Graduation
Animals
Weddings**

Commitment Ceremonies

**www.capturedink.com
763-258-6753**



**Stagetime
Productions**



952-835-1218 office

763-360-7750 cell

shannon@stagetimeproductions.com

www.stagetimeproductions.com



**Shannon Pierce
Event Producer**

Show producer for the following non-profit galas & events:



Ann Bancroft Foundation



Reach. Explore. Discover.



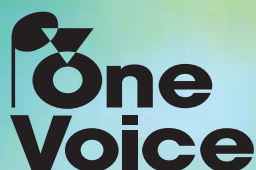
Spring & Fever

Cabaret & Silent Auction

Erin
Schwab
Host



One Voice's fabulous annual fundraiser, featuring some of the Twin Cities' hottest acts!



MIXED CHORUS

Minnesota's GLBTA Chorus

*Building community and
creating social change
by raising our voices in song.*

Save the Date!
March 19, 2011

Doubletree Hotel Park Place

More info coming soon!

www.ovmc.org/springfever

Bang Boom Crash!



June 10, 2011 • 7:30 pm & June 11, 2011 • 2:00, 7:30 pm

In the Heart of the Beast Puppet and Mask Theatre



**One
Voice**
MIXED CHORUS
Minnesota's GLBTA Chorus